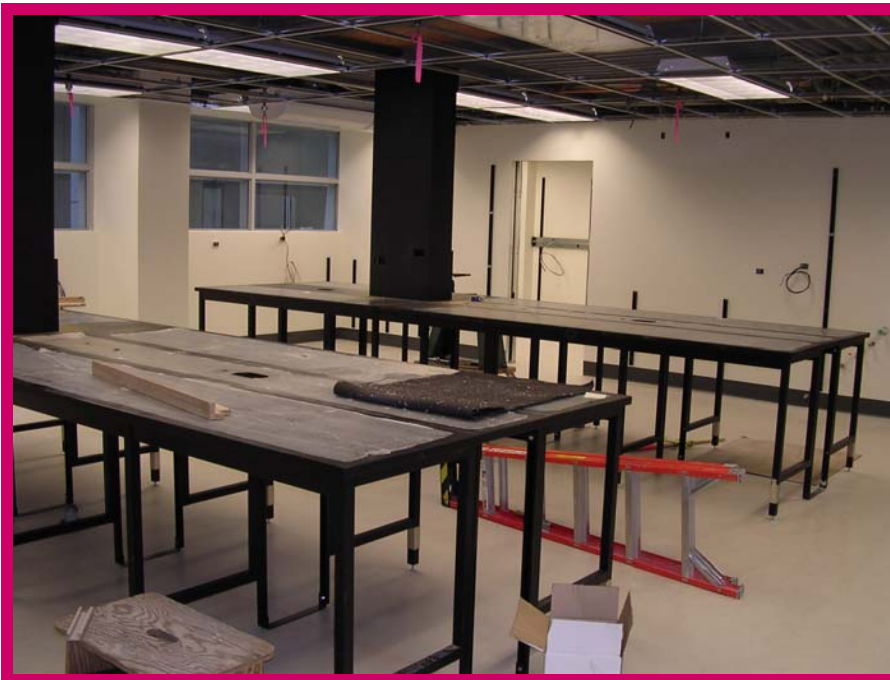


HRIC STATUS UPDATE – 2008-11-01

The Libin Cardiovascular Institute of Alberta labs on the ground floor of the Health Research Innovation Centre (HRIC) are really starting to take shape as doors are being installed, virtually all framing has now been covered, and many walls are starting to be finished. Other changes since our last update include lighting and the first sightings of lab counters. The construction project managers have reaffirmed move-in dates in quarter one of 2009.



Lab fit-out continues – Counters being installed, walls being completed, light fixtures in place and operational.



Interstitial space immediately above the Libin floor – water, air, gas, electricity. Amazingly, the visible square-footage of every lab is actually only 50% of the square-footage it requires. Before you ask, no, we cannot use this space for offices ☹